



SIYAKHULA WE ARE GROWING NEWSLETTER YA SETHO

SESOTHO

PHATLALATSO 01 2018

MINeworkers PROVIDENT FUND

MOLAETSA HO TSWA HO MOHLANKA E MOHOLO

IDIKATENG

ATHIKELE:

PAGE

- MOLAETSA HO TSWA HO MOHLANKA E MOHOLO 01
- TSHEBETSO YA PEHELETSO 02
- HO TSEBA KA MELEMO YA HAO YA HO QHWALA 02
- KAMOO O KA BALANG SETATEMENTE SA MELEMO YA HAO KA TENG 04
- FOROMO YA HO KGETHA BAJALEFA 05
- HO TLISA LETLOLE HO WENA - DI-ROADSHOW TSA NAHA 05
- PEHELETSO HO TSA BOAHI - SEKOLO SE LUSIKISIKI SE FUMANA MPHOTO YA PELE YA TJHELETE 07
- IMWPF E FUMANE TLHOLO LEKGOTLENG LA DINYEWE KGAGHLANO LE MAQWETHA A XULU 07
- KAMOO O KA IKOPANYANG KA TENG LE LETLOLE 08

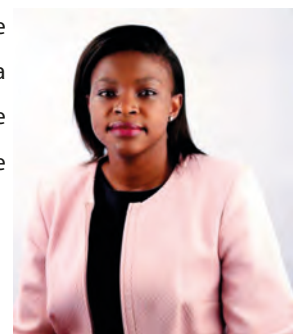
Ho beha mejafatshe ho ka bonahala e le ntho e hole bophelong ba hao ebang o sa le ka tlase ho dilemo tse 30, mme e tla fetoha nnete ha o se o fetile dilemo tse 40, empa nako e sa le teng hore o ka qala ho bolokela bokamoso.

Jwalo ka ha o le setho sa Mineworkers Provident Fund, o netefaletswa hore o rwalla bokamoso, o tseba hantle hore tefello ka nngwe o etsang e bolokhele hantle. Ditaba tse ding tse monate ke hore Letlole le o thuso bakeng sa diketsahalo tse neng di sa lebelletsa le tseo ebang di bohloko, tseo e leng karolo ya bophelo ba rona kamehla.

Phatlalatsong ena re tla tsepamisa maikutlo ho thuso ya qhwala eo e fumanang. Ho bohlokwa hore o utlwisise dithuso tse teng tle o tsebe ho etsa qeto e narg le lesedi. Hape o bale ka kutlwisiso sengolwa se hlaholang mekgwa e fapaneng ya Setatemente sa hau. Ke tshepa ha lesedi lena le tla o thusa ho utlwisisa tokomane ena ya bohlokwa.

Re le Letlole re hahamalla ho beng le tshebedisano ka botshepehi dithong tsa rona, bafani ba ditshebeletso hammoho le basebetsi. Re batla o tsebe hore, kamehla re hlokomela ditabatabelo tsa letlale.

Philda Mphedu
Mookamedi



TSHEBETSO YA PEHELETSO

Nakong ya dilemo tse ngata tse fetileng dipeheletso tsa MWPF ka tswello di fane ka dipolelo tse ntle. Le ha ho bile le mathata mebarakeng le ho hlokeha ha botsitso maamong a moruo, portfolio ya hao ya Letlole e bontsha tshebetso e ntle, kgolo ya nnete. O netefaletswa hore o tla tseba hore ditefello tsa hao di tlhokomelong e hantle.

TABLE YA PEHELETSO LE TSHEBETSO YA LETLOLE

Selemo	Thepa R	Bao e Leng Ditho
2004	8 313 299	161 447
2009	16 954 165	123 209
2014	26 618 144	100 136
2017	29 975 327	90 425

HO TSEBA KA THUSO YA HAO YA HO QHWALA



“Karolo ya dinyehelo tse lefshwang ke mohiri lebitsong la hao, e lefella Thuso Ya Ho Qhwalla Ruri le Ho Qhwala ka Hohlehohle (PTD). Thuso ena e sebetsa jwalo ka inshonrense - ebang o sa qhwala, ha o lefshwe.”



Letlole la hao le thehilwe ho fana ka thuso ho wena ha o beha mejafatshe, mme le ka tefello ya hao e lenngwe, o fumana ho feta seo e leng thuso ya ho beha mejafatshe.

Kgwedi le kgwedi, o etsa tefello ya peresente ya moputso wa hao e kenang ho Provident Fund. Hodima moo, mohiri le yena o lefaperesente ya meputso ya hao (lebitsong la hao) mme karolo eo e sebediswa ho hlokomela ditjeo tsa thuso tsa kotsi jwalo ka ho hloka-hala, ho qhwala le thuso ya lepato. Ditjeo tsa letlole di boetse di hulwa tefellong ya mohiri.

NA O NE O TSEBA HORE LETLOLE LE FANA KA THUSO EBANG O QHWALLA RURI?

Karolo ya tefello tse lefshwang ke mohiri lebitsong la hao, e lefella Thuso Ya Ho Qhwalla Ruri le Ho Qhwala ka Hohlehohle (PTD). Thuso ena e sebetsa jwalo ka inshonrense - ebang o sa qhwala, ha o lefshwe.

KE MANG A LOKELWANG KE THUSOENA?

Setho le ha e le sefe seo ebang se ya qhwala ka lebaka la kotsi kapa ho kula, mme se ntse se sa kgone ho iketsetsa letho le ho sebeletsa moputso kapa phaello mosebetsing wa sona, kapa mosebetsing le ha e le ofe wa mohiring, seo ke tahlehelo ya moshwelella ya netefaletso ya ho se be maamong a ho sebetsa.

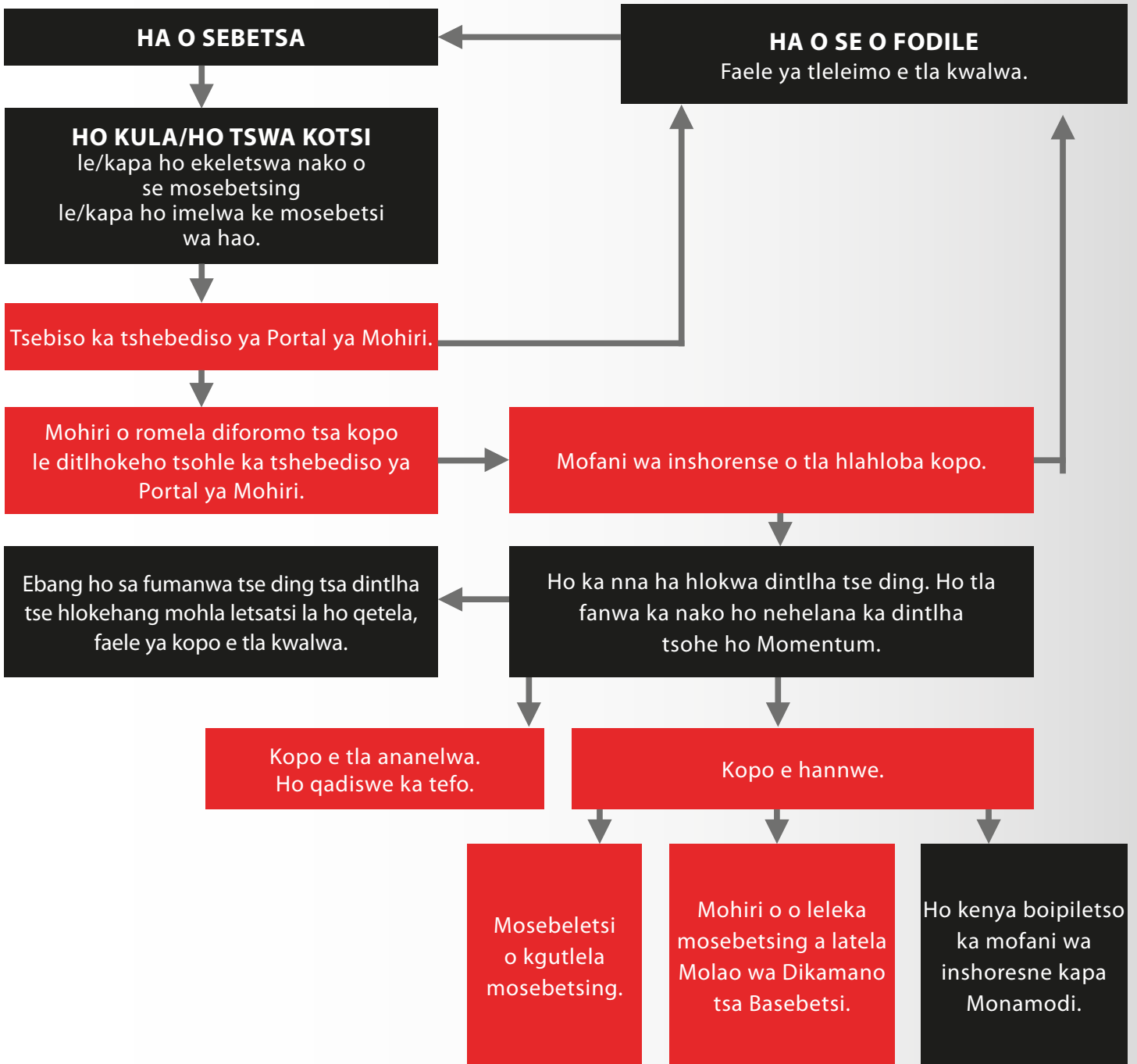
Setho se nang le a mang a mathata a latelang, ho fofala, ho se utlwe ka ditsebe, bohloko ba pelo, ho ba le lefu la tswekere la (type 2), lefu la ho wa le mathata le ha e le a fe a tsamaellanang le netefaletso ya ho sebe maamong a ho sebetsa.

KE THUSO FE E LEFSHWANG?

Hang ha o nehelane ka netefaletso ya bongaka, mme kopo ya hao ya ho qhwala e ananetswe ke mofane wa inshorene le Letlole, o tla fumana:

- Tjhelete kaofela o Nang le Yona Letloleng (dipoloko Letloleng) hammoho le
- Makgetlo a mararo (3) a moputso wa hao wa selemo e le sekolokoto.

FLOW CHART YA TSAMAISO YA DIKOPO TSA HO QHWALA



Ba keng sa ho kenya kopo bua le mohiri wa hao ho ka fumana foromo e nepahetseng ho ka e tlatsa. Mohiri o tla o tataisa hore ke ditokomane dife tse hlokehang le hore o tla latela metjha e fe, hore ho se be tiehiso.

KAMOO O KA BALANG SETATEMENTE SA MELEMO YA HAO KA TENG

Setatemente sa hao sa thuso ya Selemo o se romeletswe kgweding ya Loetse 2018. Ho o thusa ho utlwisisa setatemente sa melemo ya hao, ho na le dikarolo tse fapaneng tse hlahoswang tlase mona.



HOW TO READ YOUR BENEFIT STATEMENT KAMOO O KA BALANG SETATEMENTE SA MELEMO YA HAO KA TENG

MINEWORKERS PROVIDENT FUND MEMBER BENEFIT STATEMENT EFFECTIVE 30/12/2017

(Reg.No. 12/8/0021053/000000) / (SARS Approval Number 18/20/4/24968) Principal Officer: P MPHEPHU

Ho o thusa ho utlwisisa setatemente sa melemo ya hao, ho na le dikarolo tse fapaneng tse hlahoswang mona. Setatemente se bontsha Tjhelete Letlole (Fund Credit) la hao le melemo eo Letlole le fanang ka yona letsatsing la setatemente.

PERSONAL DETAILS			
Name & Surname:	(Name and Surname)	Category of Membership:	
Participating Employer:	Adcorp Technical Training Services	Date of Birth:	19/06/1979
Paypoint:	ADCORP TECHNICAL TRAINING (920921)	Date Joined Company:	01/01/2007
Employee Number:	MINS000	Date Joined Fund:	02/12/2007
Industry Number:	Z000000	Pensionable Service Date:	02/12/2007
Identification Number:	(SA Identity No)	Normal Retirement Date:	01/01/2017
Location:	Gauteng	Normal Retirement Age:	
		Annual Pensionable Salary:	R 96,526.32
		Annual Risk Salary:	R 120,657.96

CONTRIBUTION DETAILS FOR THE PERIOD 01/01/2017 TO 30/12/2017			
Contributions as a percentage of salary	0.47%	15.64%	25.00%
	Member (R)	Employer (R)	Total (R)
Total Gross Monthly Contribution	5,022.63	8,442.29	13,464.92
Less: Administration Fee incl VAT	0.00	480.00	480.00
Less: Risk Premiums	0.00	4,727.70	4,727.70
Additional Voluntary Contributions	0.00	0.00	0.00
Total Available Investment	5,022.63	3,234.59	8,257.22

The total available for investment reflects the monthly contribution after the deduction of administration fees payable and any inclusive risk premiums payable to the insurer.

INVESTMENT SECTION	
Retirement Funding Contributions (Total Available for Investment) are invested as shown below:	
AA (General) Portfolio	100%

FUND CREDIT BUILD UP FOR THE PERIOD 01/01/2017 TO 30/12/2017	
Balance as per previous statement as at 01/01/2017	152,691.60
Total Net Investment for the period as per the Contribution Details above	8,257.22
Transfers in for the period (External)	0.00
Transfers in for the period (Internal)	0.00
Transfers out in the period	0.00
Net Investment return	11,129.80
Investment value as at 30/12/2017	172,078.62

INVESTMENT RETURN FOR THE PERIOD 01/01/2017 TO 30/12/2017			
Portfolio	Annual Fund Return	Unit Price	Amount (R)
AA (General) Portfolio	10.43%	214.54%	11,129.80

WITHDRAWAL/ RETRENCHMENT/ DISMISSAL/ RETIREMENT BENEFIT AS AT 30/12/2017	
100% of the member Investment Value	172,078.62
Total Benefit	172,078.62

IMPORTANT NOTE:
This benefit will be subject to tax according to prevailing legislation

DEATH BENEFIT BEFORE RETIREMENT AS AT 30/12/2017	
100% of the member Investment Value	172,078.62
Insured Benefit	361,973.88
Total Lump Sum Death Benefit	534,052.50

IMPORTANT NOTE:
Insured Benefit is equal to 3.00 times Risk Salary. The Accepted Cover is payable in the event of a claim. If your entitlement is in excess of the insurers Free Cover Limit (R 4000 000.00) then you will be requested to submit medical evidence before Full Entitlement can be granted.

PERMANENT AND INDUSTRY RELATED TOTAL DISABILITY AS AT 30/12/2017	
100% of the member Investment Value	172,078.62
Insured Benefit	361,973.88
Total Lump Sum Death Benefit	534,052.50

IMPORTANT NOTE:
Insured Benefit is equal to 3.00 times Risk Salary. The Accepted Cover is payable in the event of a claim. If your entitlement is in excess of the insurers Free Cover Limit (R 4000 000.00) then you will be requested to submit medical evidence before Full Entitlement can be granted.

FUNERAL BENEFIT AS AT 30/12/2017	
The following benefits will be paid out in the event of the death of a member or any of his/her immediate family.	
Funeral Benefit	Amount (R)
Member	30,000.00
Spouse	30,000.00
Child between 14 and 21 years	30,000.00
Child between 6 and 13 years	15,000.00
Child between 1 and 5 years	7,500.00
Child between 0 and 11 months	3,750.00
Stillborn	3,750.00
Paid-Up Funeral Benefit (Retired Member)	30,000.00

- Lebitso la hao le Fane (Nepahatsa le ho lokisa mopelele le Mohiri wa hao)
- Nomoro ya hao ya Indasteri (mohl. Makuluskop)
- Nomoro ya hao ya ID kapa Pasa (Ka kopo nepahatsa nomoro ya pasa nako le nako ha e fetoha)
- Letsatsi la tswalo ho ya ka pasa kapa tokomane ya ID ya hao
- Letsatsi leo o qadileng ho sebeletsa mohiri ka lona
- Letsatsi leo o qadileng ho nyehela ka lona Letlole
- Moputso wa kgwedi le kgwedi ho ya ka letsatsi leo setatemente se entsweng ka lona
- Moputso wa hao ka selemo ho ya ka letsatsi leo setatemente se entsweng ka lona
- Nako ya dikgwedi tse 12 tsa setatemente sa molemo
- Nako eo o neng o nyehela ka yona
- Dinyehelo tse ding tseo o di entseng ka bathaopu ho ya ka dilithipho le mohiri
- Nyehelo ya mohiri ho sa kenyeletswa diteliso tsa nyehelo ya hao o ba kotsing le tsa tsamaiso
- Nyehelo ya hao e se e le kaofela (ka mora ha hulwa ha ditjelo) ho behang mejafatshe
- Tjhelete ya hao e tsetelwa ho ya ka Leano la Letlole le Matsete hore e tfe e hote
- Boleng ba tjhelete ya hao bo bulang setatementeng sa hona jwale bo tshwanela ho lekana le boleng ba tjhelete bo kwalang setatementeng sa hao sa ho qetela sa selemo.
- Ebang o rometse tjhelete ho tswa letloleng la hao la kgale hore kenya ho MWPF boleng kaofela bo tla hlaha mona
- Tjhelete Letlole e kwalang, e entsweng ka boleng ba selemona se foileng bo kwalang, ho kenyeletswa le dinyehelo tsa hona jwale ho kena botsetding ba ho beha mejafatshe le kgolo ya letlole
- Kgolo ya selemo ya Letlole ke kgolo ho boleng ba hao bo bulang bakeng sa nako e badilweng le kgolo ho dinyehelo tsa hao di se di le kaofela ho sa kenyeletswa boemo ba kotsi le diteliso. Tswala ho dinyehelo tsa tatsetso ebang di le teng, hammoho le tswala ho tjhelete e kengwang rekatong ya setho ebang e le teng, e ya kenyeletswa
- (17 & 19) Karolo ena e bontsha tjhelete e se e le kaofela ya molemo wa Lefu kapa ho Qhwala eo wena kapa bao o ba hlokometseng hammoho le bao o ba kgethileng ba tlang ho e fumana ebang o hloka hahala o ntsa o sebetse. Ebang ho se batho bao o ba hlokomelang molemo o tla lefshwa ho bao o ba kgethileng ho una molemo. Ke hona ho bohlokwa ho tlatsoa foromo ya ho Kgetha Bajalefa hore ho tle ho tsejwe batho o ba hlokomelang le bao e leng tsajalefa.
- Boleng ba hao boamong ba kotsi bo etswa ke moputso wa hao wa selemo nakong eo o qhwalang kapa o hloka halang ka yona
- Melemo ya lepato e thusa setho sa marittha, molekane le bana bao e leng ba setho sa mantlha. Sheba ditjhelete tsa melemo ya setho ka seng sa lelapa. Ha ho etsahala setho se hloka hahala kanti ho sebakisa se tlwaellehileng sa bodulo, molemo o tla boela o lefella ditjelo tsa ho tsamaisa setho ho ya moa se tlang ho bolokelwa teng
- "Molemo o lefihleng wa lepato" ke tefo ho setho se behang mejafatshe se ntsa se etsa nyehelo letlole (MWPF). Nakong ya ho beha mejafatshe setho se tla fuwa setefikeiti se tshwanelang ho bolokwa ka hloko e kgolo, hore ha nako e fihla setho se se hloka hahala, setefikeiti sena se ka nna sa iswa Kantorong ya Momentum ho etsa tleleimo ya molemo wa lepato

FOROMO YA HO KGETHA BAJALEFA

O mong wa mesebetsi e fanang ka phephetso e kgolo eo di Trustees di shebaneng le ona, ke ho etsa bonnete hore tlhelete e ajwa ntle le leeme ho bohle bao o ba kgethileng, ha o etsahala hore o hlokahale. Le ha foromo ya ho kgetha bajalefa e sa tlame ho di Trustee, e sebetsa e le tataiso ya bohlokwa nakong ya lefu la hao.

Etsa bonnete hore o tlatsa Foromo ya ho Kgetha Bajalefa selemo le selemo kapa ha maemo a fetoha ho etsa bonnete hore tlhelete ya hao e lefshwa ka ho nepahala.

THUSO YA LEPATO KA MORA DILEMO TSA HO BEHA MEJAFATSHE

Molemo wa lepato o lefshwa ho tswa Letloleng ha ho etsahala tse seng monate tsa ho hlokahala ha setho, molekane kapa ngwana. Empa ha ho ya fella moo, ebang o se o behile meja fatshe, o tswelapele ho fumana tlhokomelo ho tswa Letloleng ya molemo wa lepato wa R30 000.

HO TLISA LETLOLE HO WENA- DI-ROADSHOW TSA NAHA

Selemong sa 2017 Letlole le kene ho roadshow naha ka bophara, ho fihlella ditho hammoho le baahi moo ditho di phelang teng. Letsholo lena la ho fihlella bathong ke karolo ya boikitlaetso bo tswelangpele ba bookamedi ho ruta le ho tsebisa ditho le baja lefa ka ho buisana le bona mahlo mahlong.

DI-ROADSHOW TSA HO RUTA DITHO

Nakong ena ya di-roadshow tsa thuto ya ditho maikutlo a tsepamiswa haholo ho dithuso tse ditho le thuto ya bajalefa. Di-roadshow tse na di boetse di fana ka monyetla wa ho tlisa Letlole haufi le wena. Ho etswa monyetla wa hore Letlole le bonahale le ho ba monyetla wa ho bua le baemedi ba letlole ka kotloloho. Letlole le tla tswelapele ho buisana le bahiri bohle ho ka etsa di-roadshow nakong e tlang. Ka kopo botsa kantoro ya HR ka matsatsi a di-roadshow nakong e tlang. **Merafo e latelang e ile ya etelwa ka 2018 ho tla fihla jwale:**

Lebitso la Morafo	Mohla wa Thuto ya Ditho	Paloyohle
Northam Platinum	05 January 2018	5729
ASMAG	01 February 2018	68
Tendele	02 February 2018	401
South Deep	15 - 16 February 2018	1983
Midvaal	01 March 2018	46
Margaret Water	07 March 2018	29
Evander Mine	08 - 09 March 2018	1523
Tau Lekoa	15 - 16 March 2018	2565
Ergo Mine	20 March 2018	590
Shaft Sinkers	22 - 23 March 2018	144
Arnot (Exxaro)	28 March 2018	170
Baberton Gold	20 April 2018	1474
Harmony - Welkom Operations	04 - 27 June 2018	15226
Glencore Operations: Impuzi , Tweefontein open cast, Tweefontein underground, Glencore group services, GGV	15 le 30 June 2018	2029
Exxaro (NBC)	28 - 29 June 2018	152
Kriel	15 - 16 May 2018	408
ZAC - Zululand	27 - 28 August 2018	457
Covelent	23 August 2018	84
Anglo coal - Greenside	29 - 30 May 2018	408
Total number of members identified		36985

DI-ROADSHOW KA MELEMO E SA TLELEINGWANG

Letlole le dula ka dinako tsohle le na le dikgahlehelo tsa hao mme ke hona, re etsa ka hohle hohle hore melemo e sa tleleingwang e ya lefshwa. Ditleleimo tse sa tleleingwang ke karolo ya bohlokwa ya kgwebo ya rona mme ke hona di tswelapele. Re thabela ho etsa tsebiso ya hore tsena di atlehi, le mme ho tla fihla ha jwale re kgonne ho lefa basebetsi ba mehleng ba 4258.

Ebang o tseba le ha e le mang e le mosebeletsi wa mehleng wa morafong, a tsamaileng ntle le ho etsa tleleimo ya melemo ya hae, ka kopo, ba kope ho ikopanya le letlole. Dula o ntse o sheba van ya rona nakong ya di-roadshow! Re motlotlo ho phatlalatsa hore bakeng sa kgotsofalo ya hao, van ena ya maemo a hodimo e nang le kantoro ya hloma o hlomolle, e na la tsohle tse hlokehang ho o thusa ka mathata le ha e le a fe le ha e le neng le ha e le ho kae.



Swaziland Roadshow



MWPFP Mobile Van

PROJEKE YA BOAHI YA HO BEHELETSA - SEKOLO SE LUSIKISIKI SE FUMANA MPHO YA PELE YA TJHELETE

Esale ho le bohlokwa Letloleng ho thusa setjhaba ka kakaretso le ho nyehela projekeng e tlang ho siya lefa bakeng sa meloko e tlang. Esale ho tloha ka 2014 re ntse re tshwara diketsahalo tsa ho bokella tjhelete selemo le selemo, Letsatsi la Kolofo la Provident Fund ya Basebetsi ba Merafong Enngwe ya tjhelete e bokelletsweng re fane ka thuso ya pele ya tjhelete sekolong sa Lusikisiki, Eastern Cape se bitswang Thembalethu Junior School.

Sekolo se ne se fetohile dithako mme se hloka ho ntjhafatswa. Hodima dintlhafatso, re aha moralo wa motheo mme projeke e tshwanela ho fela mafelong a Mphalane 2018. Ena e sa le qalo, ka ha re ikemiseditse ho etsa diprojeke tse ngata tse kang ena dibakeng tseo ditho tsa rona le baja lefa ba dulang ho tsona.



Dintjhafatso Thembalethu Junior School



Ho ahwa ha moralo wa motheo ho tswelapele

MWPFP E FUMANWE KA MORA TLHOLO LEKGOTLENG LA DINYEWE KGHLANO LE MAQWETHA A XULU

Makgabane a bohlokwa a Provident Fund ya Basebetsi ba Merafong ke tlhompho, seriti le lefa moo Letlole le susumetswang ke takatso ya ho siha ho itseng ho tlang ho ba ha bohlokwa bakeng sa leloko le tlang. Ke ka lebaka la mohopolo ona re hahamallang ho sebeletsa ditho tsa rona le baja lefa ka tlhompho e makatsang le ponaletso le ho nka mehato ho fetisa, ho etsa bonnete hore ditho tsa rona le baja lefa di fumana se ba tshwanetseng ka potlako e kgolo.

Ka bomadimabe ha se bohle ba nang le ponelopele e tshwanang le ya rona. Le ha re etsa tsohle ho netefatsa hore melemo e lefshwa ka tshwanelo, ho na le ditlokotsebe tse rerang ebile di atleha ho utswa tjhelete ya ditho ya dipolokelo tsa bona tsa bophelo bohle, ka ho sebedisa ditho ho una ka bolotsana.

Re batla ho o tsebisa hore, ha re tsebiswa ka ditefello tse kang tseo, re etsa sohle ho netefatsa hore ntho e jwalo e ya fela, mme toka e ya phethahatswa. Re thabela ho o tsebisa hore maqwetha a Xulu a isitse letlole lekgotleng la dinyewe ka lebaka la hore Letlole le hanne ho lefa tjelele akhaonteg ya motho wa boraro. Nyewe e qadile ka 2014 mme ka mora ho hula dilemo, re thabela ho etsa tsebiso hore lekgotla le dihile kahlolo e molemong wa Letlole.

Re kopa ditho ho fadimeha le ho ikopanya le Mineworkers Provident Fund ka kotloloho ebang ba batla ho kenya kopo. Letlole le ke ke la lefa tjelele ya setho maamong le ha e le a fe ho e kenya akhaonteng ya motho wa boraro. Ho bohlokwa ho ela hloko hore ha re o lefise tjelele ho sebetsana le kopo ya hao kapa ho fumana ebang ho na le tjelele eo o tshwanelang ho e lefshwa. Ebang o koptjwa ho lefa tjelele ke mang kapa mang hore kopo ya hao e potlake ho lefshwa, ka kopo tlaheha taba ena ntlokgolo ka ha e sa kamoo re sebetsang ka teng.

Sheba www.mwpcf.co.za kapa o letsetse 010 100 3001 ho utlwa haholwanyana ka ho etsa kopo. Kapa o ka ikopanya le moemedi wa hao wa HR.

O IKOPANYA JWANG LE LETLOLE

Ebang o ka ba le ditlalebo tse malebana le tjelele ya Letlole kapa o ka rata ho latella kopo ya hao, o ka nna wa sebedisa metjha e fapaneng. Re amohela tletlebo ya hao. Ho ka o nolofaetsa mosebetsi, o ka nna wa etela ho se seng sa ditsha tse latelang ho fumana thuso:

MINeworkers PROVIDENT FUND DITSHA TSEO O YANG HO TSONA

DITSHA TSEO O YANG HO TSONA	ATERESE YA BODULO	NOMORO YA MOHALA	EMAIL ADDRESS
Carletonville	Office No. 2, Uys Buys Business Park Cnr, Kaolin & Radium Street, Carletonville, 2499	(010) 100 3001	clientservices@mineworkers.co.za
Witbank	Office No. 9, M&B Centre, 16 Mandela Street, Witbank, 1034	(010) 100 3001	clientservices@mineworkers.co.za
Welkom	2nd Floor, Metropolitan Building, 16 Mooi Street, Welkom, 9459	(010) 100 3001	clientservices@mineworkers.co.za
Johannesburg	Cnr Melle & 26 Ameshoff Str, Braamfontein, Johannesburg, 2000	(010) 100 3001	clientservices@mineworkers.co.za
Orkney	Shop No, 12, Umuzimuhle Shopping Complex, Vaal Reefs No 3, Orkney, 2619	(010) 100 3001	clientservices@mineworkers.co.za
Mthatha	No 49 Leeds & Craiser Street, Metropolitan Place, 1st Floor, Mthatha	(047) 531 2003	clientservices@mineworkers.co.za
Mozambique	Bairro de Chinunguine C, Praia de Xai-Xai, Cidade de Xai Xai, Provincia de Gaza, Mocambique	(010) 100 3001	clientservices@mineworkers.co.za

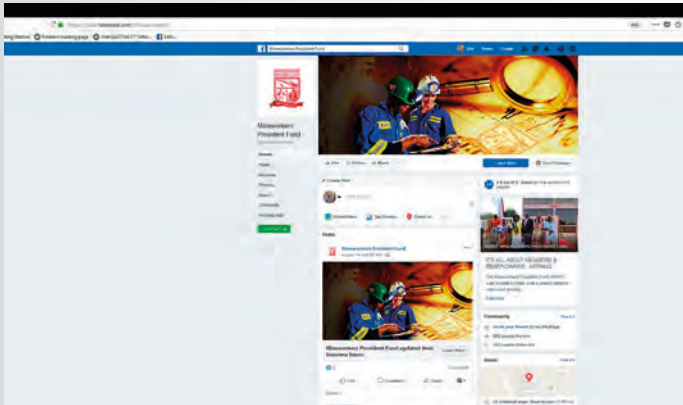
DIKHONSALETENTE TSA EBS

Letlole le hira dikhonsaletente tse fapaneng tsa EBS ho o thusa ka ditletlebo le ha e le dife. O tla fumana dikhonsaletente tse na merafong e latelang:

LEBITSO LA MORAFO	SEBAKA	BOTSAMAISI
Northam	Thabazimbi	Pertunia Mabote
Harmony	Free State	Joseph Mlambo
	Westernarea	Dineo Mphapho
	Carletonville	Petronella Modutsoane
Sibanye	Carletonville	Kamohelo Sedimo
		Nelisiwe Mkhonza
		Andries Ndlovu
Anglogold Ashanti	Free State	Tebogo Mavhundla
	Orkney (Vaal)	Mbathini Dlamini
Glencore	Carletonville	Sthembiso Mabaso
		Mpumalanga

RE LATELE HO FACEBOOK LE TWITTER

Dula o tseba ka ditaba tse etsahalang tse malebana le Letlole ka ho re latela ho di Social Media:



<https://www.facebook.com/mineworkerpf/>



<https://twitter.com/Mineworkerspf/>

MAIKUTLO A HAO KE A BOHLOKWA HO RONA

Jwalo ka ha maikutlo a hao e le a bohlokwa ho rona, re ka rata ho tseba ka ona. Ka kopo re tsebise hore o nahana eng ka newsletter ka ho re romela emeile ho:

externalcomm@mineowrkers.co.za

DINTLHA TSA HO IKOPANYA LE KANTORO YA NTLOKGOLO YA LETLOLE

Mineworkers Provident Fund Building, 4th Floor,
26 Ameshoff Street Cnr Melle, Braamfontein

010 100 3001

www.mwpcf.co.za



Disclaimer: The information provided in this newsletter is protected by applicable intellectual property laws and cannot be copied, distributed or modified for commercial purposes. While every effort has been made to ensure that the information contained herein is current, fair and accurate, this cannot be guaranteed. The use of this information by any third party shall be entirely at the third party's discretion and is of a factual nature only. Please note that if the content of the newsletter conflicts with the Rules of the Fund, the Rules shall prevail. MWPF does not accept any liability due to any loss, damages, costs and expenses, which may be sustained or incurred directly or indirectly as a result of any error or omission contained herein.